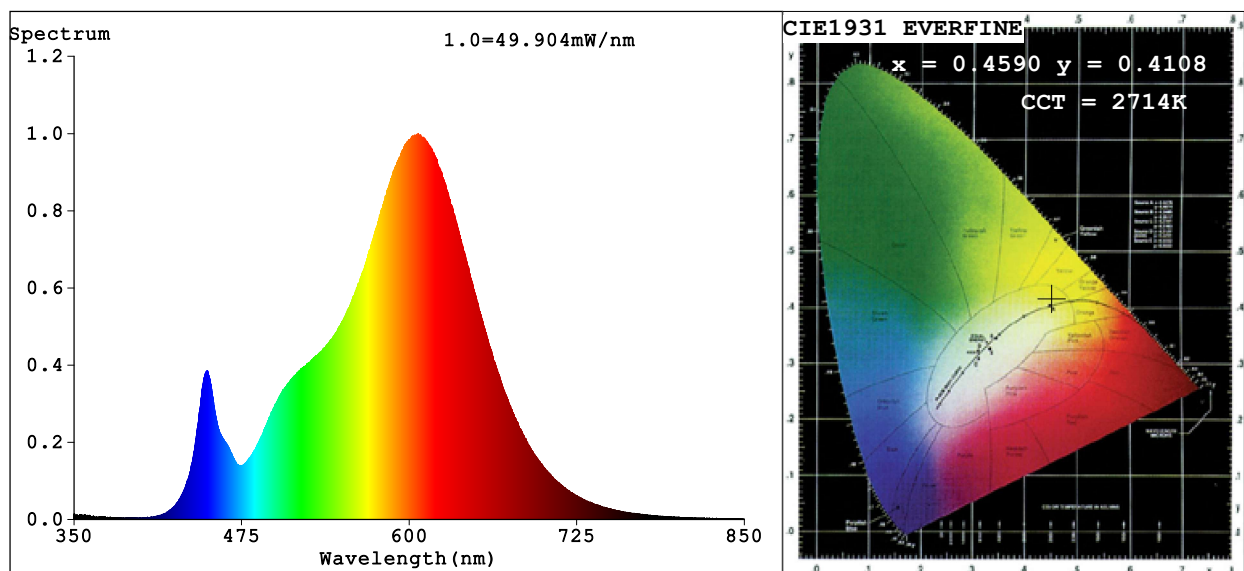


Spectrum Test Report



Color Parameters:

Chromaticity Coordinate: $x=0.4590$ $y=0.4108$ $u'=0.2619$ $v'=0.5273$

CCT=2714K (Duv=0.0001) Dominant WL:Ld =584.1nm Purity=61.1%

Ratio:R=25.0% G=72.7% B=2.3%; Peak WL:Lp=606.8nm FWHM=108.5nm

Render Index:Ra=82.1 CRI=77.5 TM30:Rf=82 Rg=95

R1 =81 R2 =92 R3 =94 R4 =81 R5 =82 R6 =92 R7 =80

R8 =55 R9 =2 R10=83 R11=82 R12=80 R13=83 R14=97 R15=72

Photo Parameters:

Flux = 2228 lm Eff. : 108.42 lm/W Fe = 6.787 W

Electrical parameters:

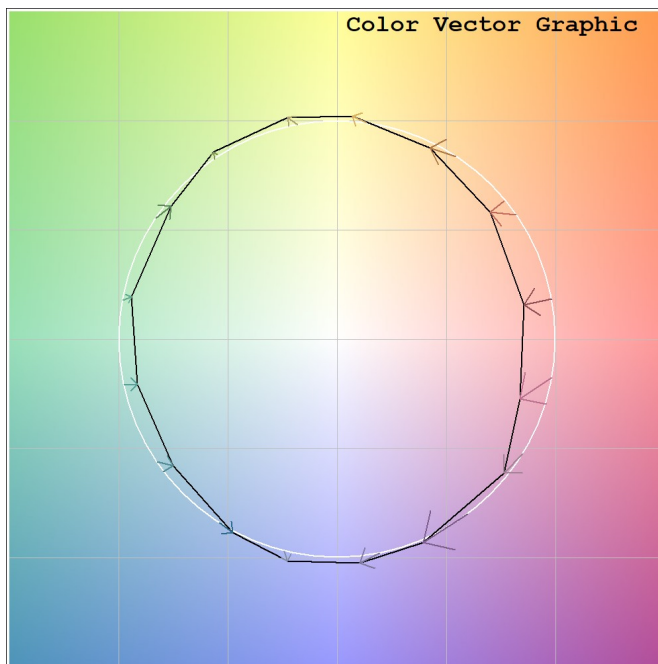
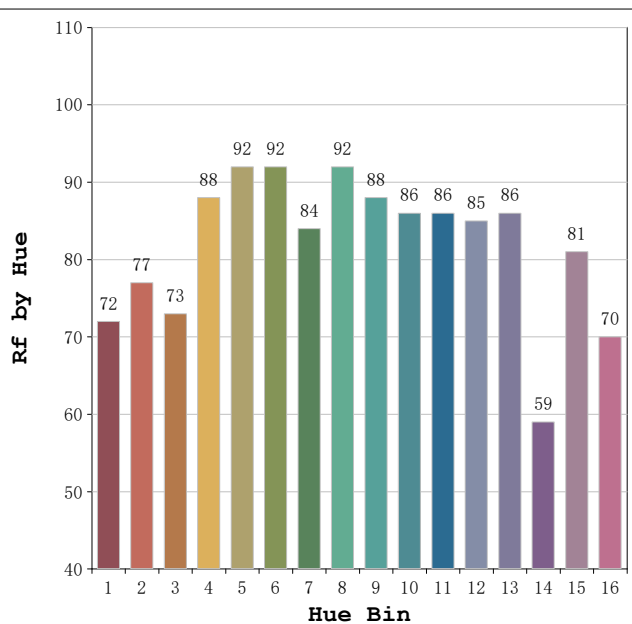
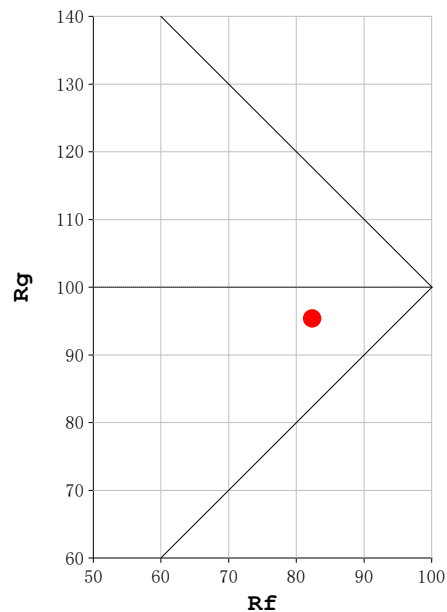
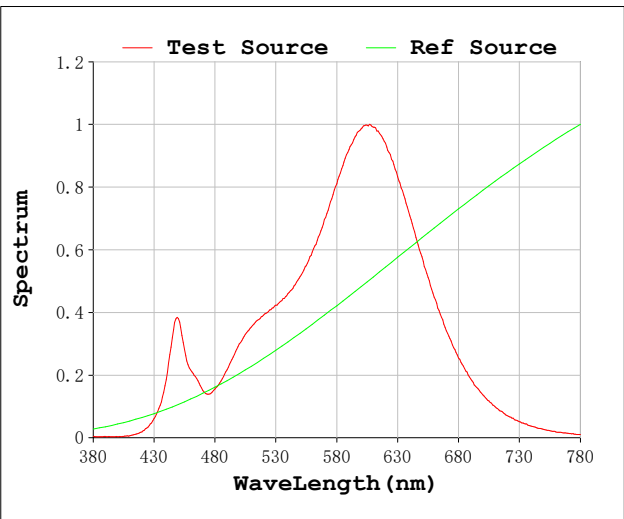
V = 23.998 V I = 0.8564 A P = 20.55 W PF = 1.000

Status: Integral T = 545 ms Ip = 53440 (82%)

Model:Ecoled Roll to roll
Tester:Sergio Carneros
Temperature:20Deg
Manufacturer:Luz Negra

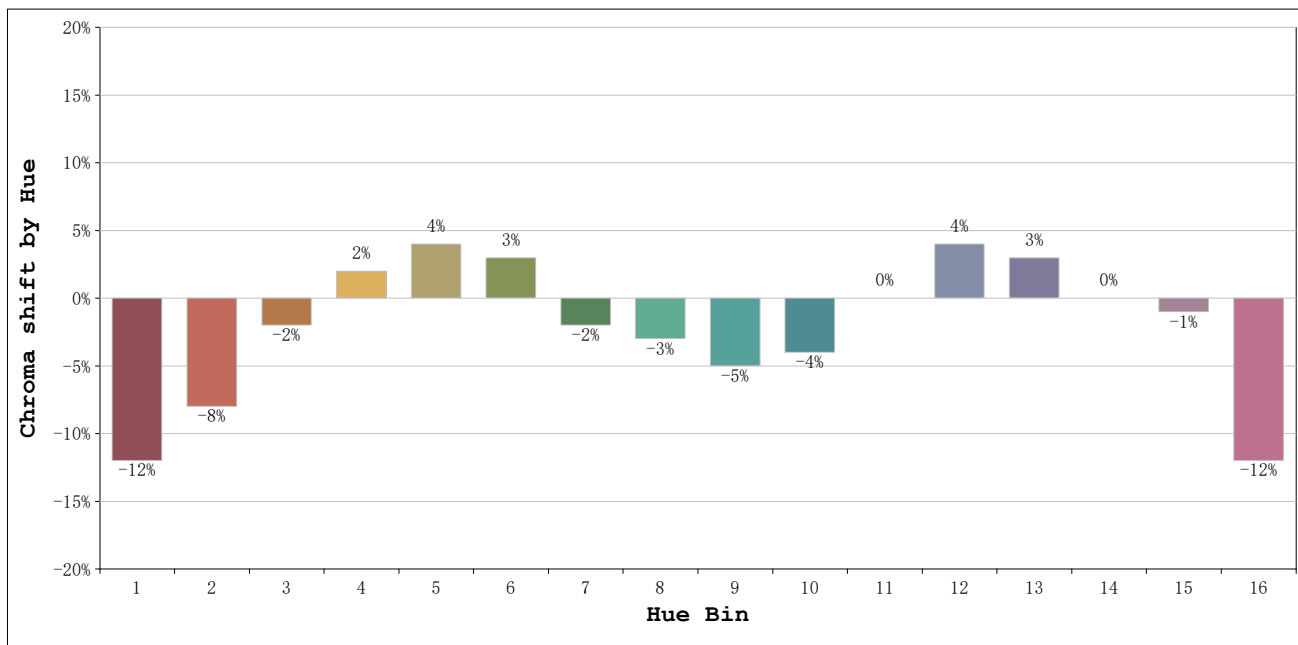
Number: 31.272
Date:2025-06-17 08:06:48
Humidity:50%
Remarks:100cm de tira flexible

Rf: 82 **CCT: 2714 K** **u': 0.2619**
Rg: 95 **Duv: 0.0001** **v': 0.5273**



Model:Ecoled Roll to roll
 Tester:Sergio Carneros
 Temperature:20Deg
 Manufacturer:Luz Negra

Number: 31.272
 Date:2025-06-17 08:06:48
 Humidity:50%
 Remarks:100cm de tira flexible



			Graphic shift(%)	
Hue Bin	Hue Angle	Rf	Chroma	Hue
1	0.0° - 22.5°	72	-12	0
2	22.5° - 45.0°	77	-8	8
3	45.0° - 67.5°	73	-2	12
4	67.5° - 90.0°	88	2	7
5	90.0° - 112.5°	92	4	4
6	112.5° - 135.0°	92	3	0
7	135.0° - 157.5°	84	-2	-7
8	157.5° - 180.0°	92	-3	-1
9	180.0° - 202.5°	88	-5	1
10	202.5° - 225.0°	86	-4	6
11	225.0° - 247.5°	86	0	7
12	247.5° - 270.0°	85	4	2
13	270.0° - 292.5°	86	3	-9
14	292.5° - 315.0°	59	0	-23
15	315.0° - 337.5°	81	-1	-11
16	337.5° - 360.0°	70	-12	-11

Model:Ecoled Roll to roll
 Tester:Sergio Carneros
 Temperature:20Deg
 Manufacturer:Luz Negra

Number: 31.272
 Date:2025-06-17 08:06:48
 Humidity:50%
 Remarks:100cm de tira flexible